



SYNNECT

LEARNTRA™

Intelligence for Learning. Trust for Progress. Systems for the Future.



Learntra

Learntra™

Intelligence for Learning. Trust for Progress. Systems for the Future.

Learning Without Fragmentation. Intelligence Without Compromise.

Learning today is fragmented across systems, institutions, and stages of life. Learner records are siloed. Assessment integrity is inconsistent. Skills data is disconnected from real-world demand.

Learntra™ addresses this challenge by serving as the central orchestration layer for modern education ecosystems. It connects learners, educators, administrators, regulators, and employers through a unified platform that manages learning journeys, assessment trust, credentials, and intelligence at scale.

Built for interoperability and governed by trust, Learntra™ enables education systems to move beyond delivery — toward insight-driven, outcome-focused learning.

Intelligence for Learning. Trust for Progress. Systems for the Future.



The Education System Challenge

From Disconnected Learning to Unified Intelligence

Modern education operates across:

- Schools, colleges, universities, and training centres
- Public and private institutions
- Digital, physical, and hybrid environments
- Formal qualifications and informal skills development

Yet these environments remain disconnected. Institutions struggle to see learner progression. Regulators lack consistent visibility. Employers cannot easily trust or verify credentials. Learners carry fragmented records across life stages.

Learnta™ introduces a **system-level approach to education** — one that preserves institutional autonomy while enabling continuity, intelligence, and trust across the entire learning ecosystem.

It does not replace existing systems.
It **orchestrates them.**

Intelligence for Learning. Trust for Progress. Systems for the Future.



Learner Identity, Experience & Assessment Trust

Learner Identity & Lifestyle Intelligence

Leartra™ establishes a single, secure digital identity for each learner that persists across time, institutions, and programmes.

This identity becomes the foundation for tracking academic history, skills development, assessments, and credentials throughout the learner journey.

Capabilities include:

- Unified learner profiles across institutions
- Lifelong academic and skills history
- Secure identity verification and access control
- Portability of learner records
- Privacy and data sovereignty management
- Cross-institution learner continuity

Learning Experience Orchestration

Leartra™ orchestrates learning rather than replacing existing platforms. It integrates multiple LMS systems, content providers, and digital classrooms into a cohesive learning experience tailored to institutional and enterprise needs.

Capabilities include:

- Multi-LMS and content platform integration
- Learning pathway and curriculum orchestration
- Adaptive learning flows based on performance
- Engagement and participation tracking
- Institution-specific experience configuration
- Programme alignment across systems

Assessment Integrity & Proctoring Intelligence

Assessment integrity is embedded as a trust layer across all forms of evaluation.

Capabilities include:

- Digital assessment management
- Remote and on-site proctoring
- AI-assisted behaviour and anomaly detection

- Identity authentication and verification
- Assessment audit trails and reporting
- Compliance with institutional and regulatory standards

Credentials, Skills & Learning Intelligence

Credentiailling & Skill Verification

Learnta™ manages credentials as **dynamic, verifiable records** rather than static certificates.

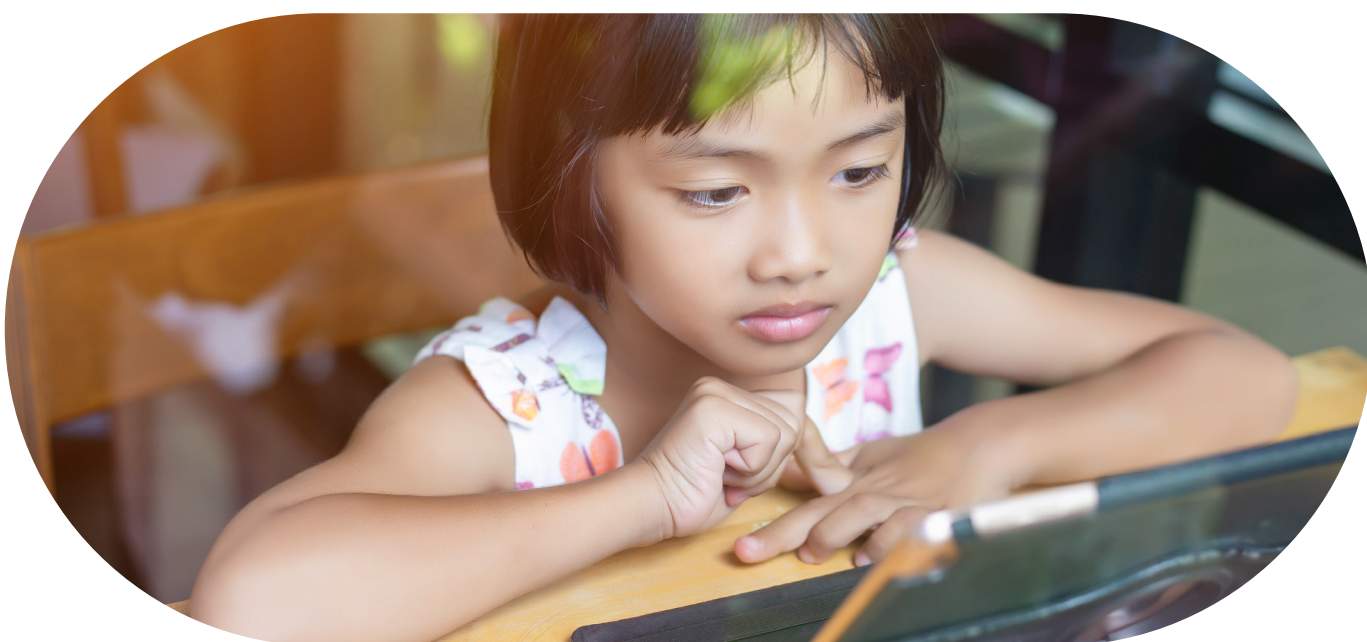
It supports academic qualifications, professional certifications, micro-credentials, and skills attestations that can be securely verified and shared across institutions, employers, and borders.

Capabilities include:

- Digital credential issuance and storage
- Skills and competency mapping
- Credential verification and authenticity assurance
- Portability and controlled sharing
- Employer and industry validation workflows
- Alignment with national and global qualification frameworks

Learning Analytics & Insight Intelligence

Learnta™ transforms education data into actionable intelligence for educators, administrators, regulators, and policy leaders.



Capabilities include:

- Learner progression and performance analytics
- Early risk detection and intervention insights
- Institutional performance dashboards
- Assessment and outcome analysis
- Skills demand and workforce alignment
- Data-driven academic planning

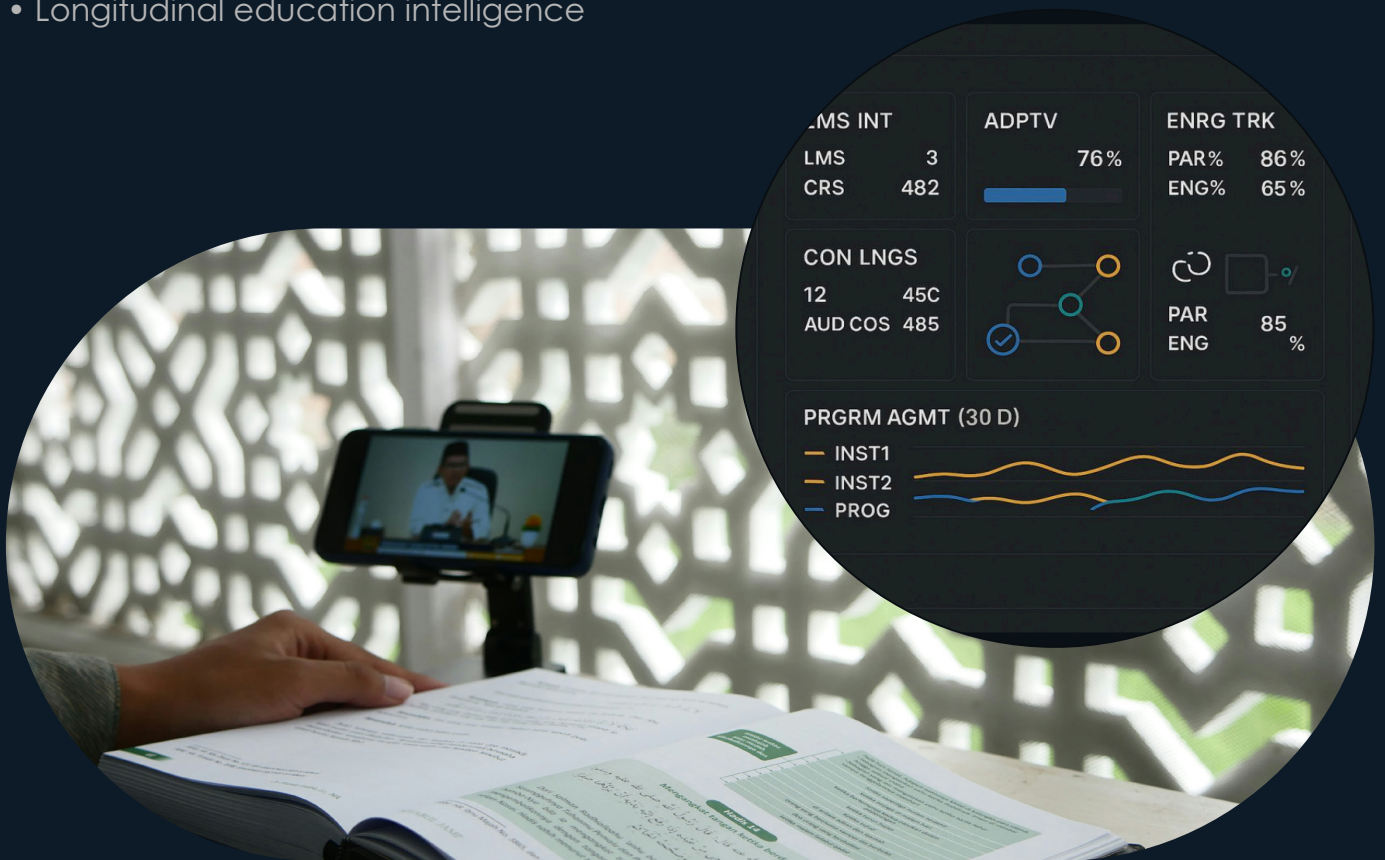
Population & System-Level Education Intelligence

At scale, Learntra™ enables macro-level education intelligence.

Capabilities include:

- Aggregate learner and programme analytics
- Regional and national education insights
- Policy outcome measurement
- Capacity planning and forecasting
- Equity and access analysis
- Longitudinal education intelligence

Intelligence for Learning. Trust for Progress. Systems for the Future.



Integration, Governance & Trust

Integration & Interoperability Services

Learntra™ is built to coexist within complex education ecosystems.

Capabilities include:

- Standards-based system integration
- API-driven data exchange
- Secure synchronisation across platforms
- Third-party learning tool integration
- Extensible partner ecosystem
- Enterprise and government system compatibility

Governance, Compliance & Trust

Governance and accountability are embedded by design.

Capabilities include:

- Role-based access governance
- Comprehensive audit trails
- Data protection and privacy controls
- Institutional and regulatory compliance
- Risk and integrity monitoring
- Transparent operational oversight

Learntra™ ensures that trust is not an afterthought — it is the foundation of the system.

Platform Architecture & Why Learntra™

Platform & Framework

Learntra™ is engineered as a secure, scalable education intelligence platform that integrates seamlessly into existing learning environments.

Core architectural components include:

- **Learner Identity Fabric**

A persistent digital identity that follows learners across institutions, programmes, and life stages while preserving privacy and control.

- **Orchestration Layer**

A unifying layer connecting LMS platforms, assessment tools, content libraries, and credential systems without replacing them.

- **Data Intelligence Core**

Real-time analytics and insight services for educators, institutions, and policy makers.

- **Trust and Integrity Framework**

Embedded controls for identity verification, assessment assurance, auditability, and compliance.

- **Open Integration Architecture**

Standards-based APIs enabling interoperability with education, enterprise, and government systems.

- **Scalable Data Fabric**

Distributed data architecture supporting real-time ingestion and longitudinal learner records.

- **Security & Sovereignty Architecture**

End-to-end encryption, jurisdiction-aware data residency, and policy-driven access controls.

- **Extensible Intelligence Layer**

Native support for advanced analytics and AI services via Cognify™, enabling predictive insight and adaptive learning models.

Why Choose Continuum™

Built for Learners, Not Just Systems

Leartra™ places the learner at the centre while respecting institutional structures and regulatory requirements.

Additional differentiators:

- Orchestration without disruption
- Trust at every layer
- Intelligence that drives outcomes
- Scales from institution to nation
- Designed for the future of learning

Learning That Endures

Leartra™ is more than a learning platform. It is the intelligence layer that connects education, skills, and opportunity across a lifetime.

By unifying learning systems with trust, insight, and scale, Leartra™ empowers institutions and societies to build education systems that endure, adapt, and create meaningful impact for generations to come.

Intelligence for Learning. Trust for Progress. Systems for the Future.



enquiries@synnect.co.za



<https://www.synnect.africa>

Follow Us:



© 2025 Synnect (Pty) Ltd. All rights reserved.

This document and its contents, including all concepts, frameworks, methodologies, designs, and platform architectures, are the intellectual property of Synnect (Pty) Ltd.

The information contained herein is provided for informational purposes only and remains proprietary to Synnect. No part of this document may be reproduced, distributed, modified, or used for commercial or public purposes without prior written consent from Synnect (Pty) Ltd.

All rights are expressly reserved.

12
Years

Passion. People. Technology